



BOLD

is beautiful

Bold is back with a vengeance. Gone are the days of neutral, natural and bland home interiors, replaced by something a little more dramatic. Or so Rippon Homes' own interior designer Pauline McGrath tells us.

"Glitz and glamour are the buzz words for interior designers throughout the UK at present," she explains. "Ornate is in and anything even remotely minimalist is OUT! It's a lot less restrictive for those in my profession and I'm having great fun dressing showhomes around the region in bright, bold designs.

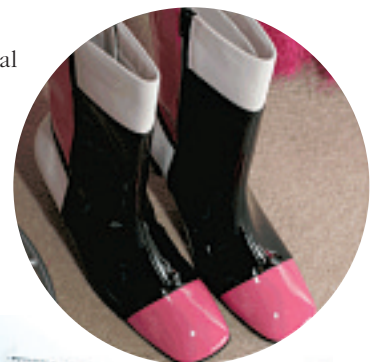
"This year's fashion for interior design has centred around big, in-your-face wallpaper, however, the modern way to 'wear' it is on just one wall. This look works particularly well with a textured or glossy finish to the pattern, a little something to give it that contemporary edge.

"Flock wallpaper with a suede-effect pattern or a Victorian style fleur-de-lis metallic pattern on a black background are both particularly popular. The resurgence of wallpaper reflects the return to a more traditional feel interior with a modern twist. The art-deco, baroque and retro styles are still very much in vogue, but using more modern materials."

Pauline says variety of textiles is vital, adding, "Rough and irregular textures are popular along with a combination of different patterns, textures and textiles - as long as there is one unifying element, such as colour or shape. Matching the decoration exactly is a no go but mixing it up too much will ruin the effect."

Rippon Homes adds a polished finish to its striking showhomes.

Polished wood, glass and metal continue to be fashionable materials for a contemporary look - anything that adds a bit of shine as the matt finish that we've all grown tired of has certainly seen better days! The latest addition to this



■ The exterior view of the homes at Meadow Bank on Baums Lane.